



RECP #: 752710

RECORDED 5/8/2019 AT 1:13 PM BK# 2620 PG# 1752
Debra K. Lee, CLERK OF LARAMIE COUNTY, WY PAGE 1 OF 1

STATE OF WYOMING CORNER RECORD

(In compliance with the CORNER PERPETUATION AND FILING ACT, Wyoming Statutes, 1997 Section 33-29-140, et. seq., and the Rules and Regulations of the Board of Registrations for Professional Engineers and Professional Land Surveyors)

NORTHEAST CORNER SECTION 16, T. 18 N., R. 61 W., 6TH P.M., LARAMIE COUNTY, WYOMING

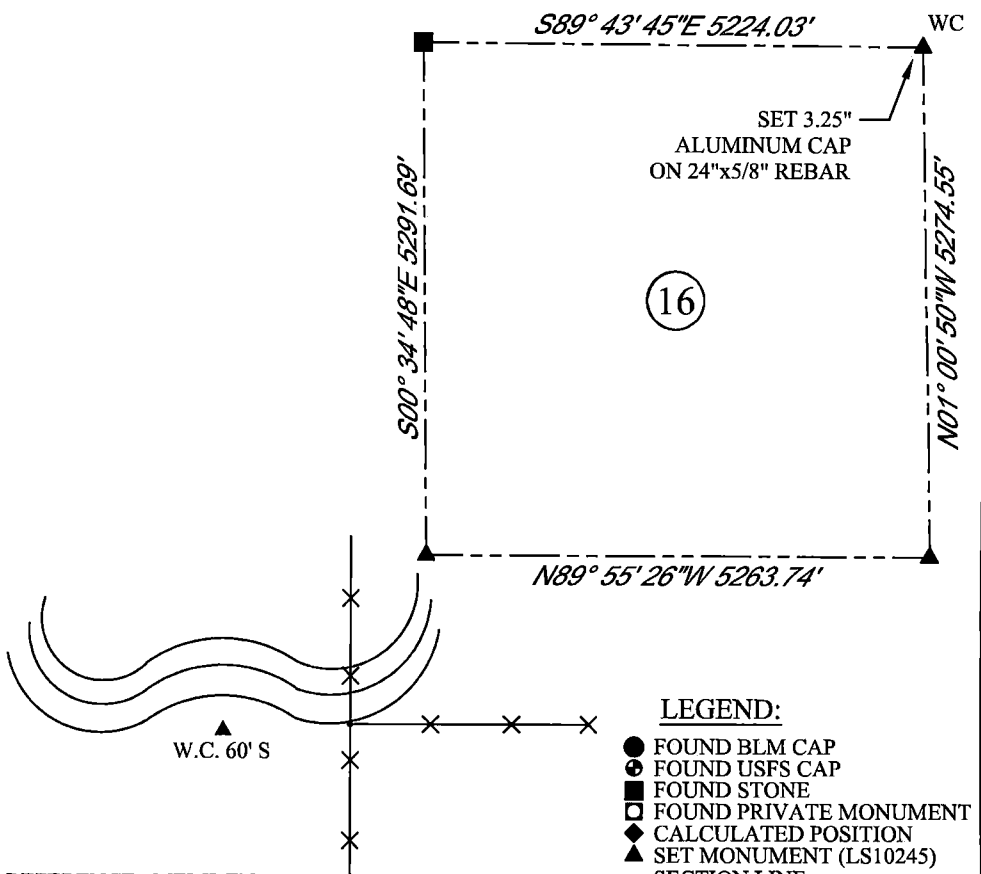
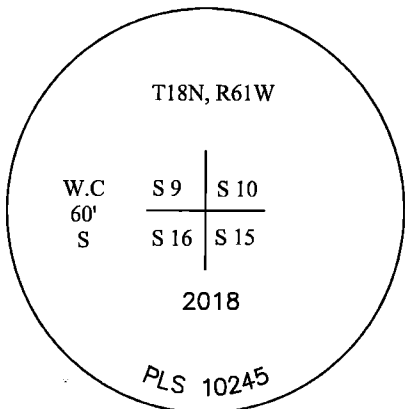
GLO: A SANDSTONE 20X8X8 SET 15" DEEP MARKED WITH 4 NOTCHES ON THE SOUTH EDGE AND 3 NOTCHES ON THE EAST SIDE FOR CORNER TO SEC. 9,10,15,16.

FOUND: NOTHING

SET: SET A 3.25" ALUMINUM CAP ON A #5 REBAR AT SURFACE, MARKED AS SHOWN CORNER IS SET ON SOUTH BANK OF CREEK AS SHOWN, WITH A FIBERGLASS ROD ON NORTH SIDE. TRUE CORNER POSITION DETERMINED TO FALL IN EXISTING FLOODPLAIN OF HORSE CREEK. THIS SURVEY WAS UNABLE TO RECOVER ANY ORIGINAL MONUMENTS SOUTHERLY OF THIS CORNER IN T18N R61W. THE POSITION WAS RE-ESTABLISHED UPON REVIEW OF GLO FIELD NOTES DESCRIBING THE NORTHERN BANK OF HORSE CREEK AND UTILIZING RECOVERED MONUMENTS AT THE SOUTHEAST CORNER OF SEC. 10 AND SOUTHWEST CORNER OF SEC. 9 FOR CONTROL IN A COMPASS RULE CALCULATION. WITNESS CORNER SET 60' SOUTHERLY OF CALCULATED POSITION ON LINE WITH RE-ESTABLISHED TOWNSHIP LINE ALONG THE SOUTHERN BOUNDARY OF T18N R61W.



SCALE: NONE
NORTH DETERMINED BY
G.P.S OBSERVATIONS



DATE OF FIELD WORK: 10/17/2018 OFFICE REFERENCE: MERIDEN

CROSS INDEX DIAGRAM

	1	2	3	4	5	6	7	8	9	10	11	12	13	14	15	16	17	18	19	20	21	22	23	24	25		
A																											B
B																											C
C			6																								D
D				5																							E
E					4																						F
F						3																					G
G			7																								H
H				8																							I
I					9																						J
J																											K
K																											L
L			18																								M
M				17																							N
N					16																						O
O						15																					P
P			19																								Q
Q				20																							R
R					21																						S
S						22																					T
T			30																								U
U				29																							V
V					28																						W
W						27																					X
X			31																								Y
Y				32																							Z
Z					33																						
	1	2	3	4	5	6	7	8	9	10	11	12	13	14	15	16	17	18	19	20	21	22	23	24	25		

WOOD
2615 AVIATION DRIVE
SHERIDAN, WY 82801
PH: 307-675-6400



THIS CORNER RECORD WAS
PREPARED BY ME OR UNDER
MY DIRECTION AND
SUPERVISION,
SEAL AND SIGNATURE

